

FORD FALCON





Falcon: the great Australian road car.

Ford forges further ahead with new Falcon. It's built bolder, tougher, sleeker, stronger than Falcon has ever been built before.

Ford stylists and engineers have gone over Falcon with a fine toothcomb. Making literally hundreds of modifications and improvements. Improvements that range from standard disc brakes and inertia reel



seat belts on every new Falcon, right down to refinements to suspensions and new door seals.

Improvements to make new Falcon an even better car for you to drive.

And, like every Falcon before it, new Falcon has been designed for a country as challenging as Australia. Still with the widest track and lowest centre-of-gravity for the surest, most road-hugging ride of any car in its class.

Illustrated: Fairmont in Tropic Gold with optional vinyl roof and accent moulding accessory.



Fairmont: New frontiers of luxury.

Fairmont has a style all its own. Something special that sets it apart from any other car in its class.

For example, new Fairmont's boldly restyled exterior is highlighted and complemented by tasteful bright steel ornamentation on window frames and sills, on the wheel arches and along the lower body panels. Distinctive Fairmont script adds to the style.

But inside is where Fairmont's elegance really begins. With exclusive, highbacked deeply cushioned



seating comfort, that sets the tone of its gracious interior. Seats that are fully reclining. Luxurious deep pile carpet underfoot. And thoughtful little extras like reading lights in the rear compartment and lights in the glove box and boot.

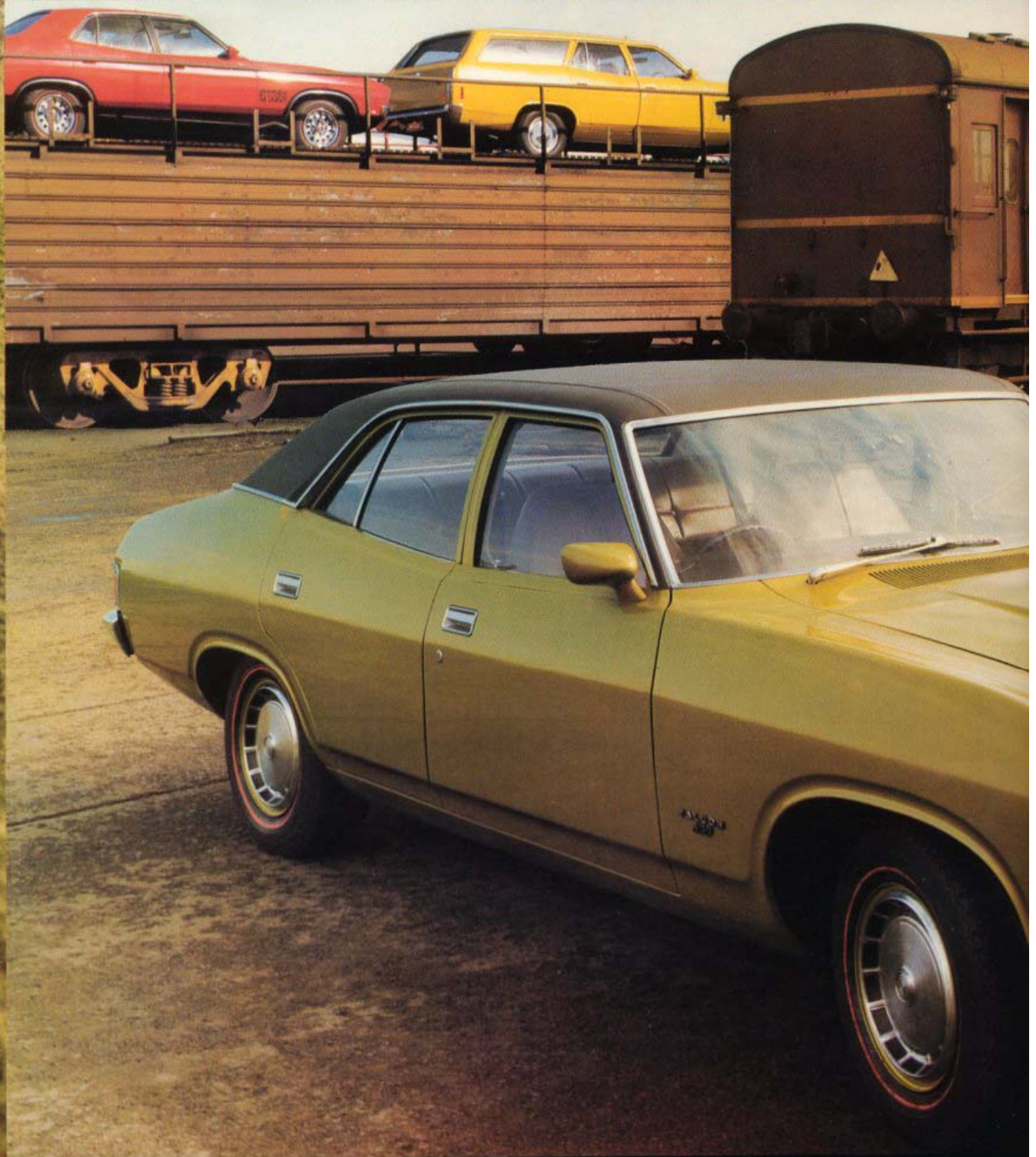
Fairmont Standard Equipment:

• High performance 250 CID, 155 horsepower 'six' • Select-Shift—3 speed Cruisomatic transmission • Turbo-cooled front power disc brakes • 6.95L14 Tyres • High-back, contoured and reclining front seats with foldaway centre armrest • Deeply contoured rear seats with foldaway centre armrest • Luxury quality vinyl seat trim • Car and body sensitive front inertia reel seat belts • Fully carpeted

passenger compartment • Roof insulation and sound deadening materials all round • Wrap-round padded cockpit type instrument panel with rocker switch controls • Aeroflow flow-through ventilation • Blendaire heater and demister with 2-speed fan • 2-speed windscreen wipers with push button washer control • Steering and ignition lock • Steering column stalk control incorporating turn indicator, lane change, Hi-Lo beam, Headlight flasher and Hornbutton • Padded doorpull armrests front and rear • Lockable and illuminated glove box • Interior courtesy lights and special reading lights in rear compartment • Reversing lights and luggage compartment light • Dual horns • Cigar lighter • Styled wheelcovers • Prismatic day-night rear view mirror.

All Ford Lifeguard design safety features listed in page 16. A full list of Options is also featured on pages 13, 14 and 15.

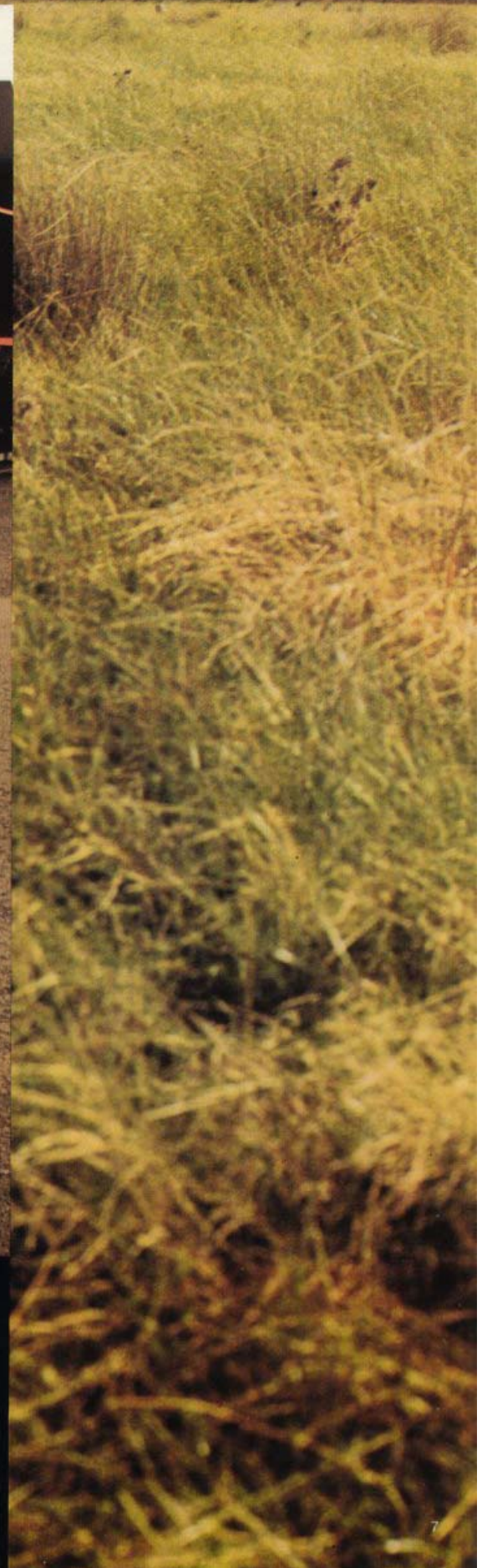
Fairmont interior in luxury vinyl saddle trim with optional sports console, T-Bar automatic, radio and airconditioning.



New frontiers of style and value.

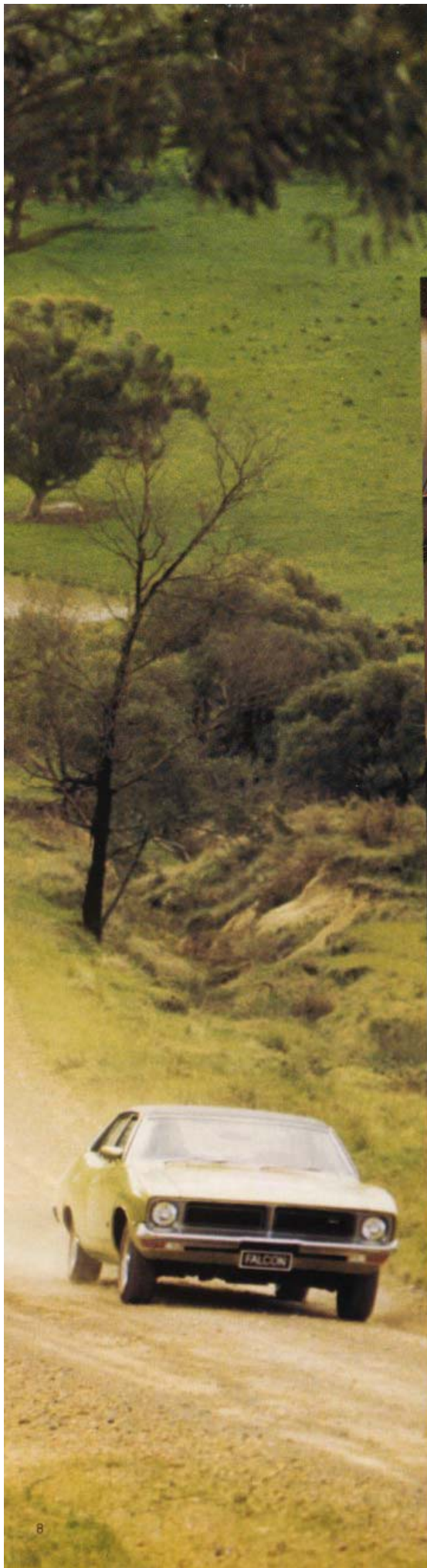
FUTURA: The top-of-the-line 250 CID 155 horsepower six-cylinder engine is standard. As are front power disc brakes, the all synchromesh, 3-speed manual column change transmission, the high-back full-width front seats, with foldaway centre armrest. Trim is deep-grained vinyl, the floor fully carpeted. Items such as a glove box and boot light, dual horns, styled full wheel covers and chrome wheel arch mouldings make Futura stand out among other cars.

Foreground: Falcon 500 in Frosted Lime with optional vinyl roof, styled wheel covers, and 250 CID engine.
Background: Futura in Red Pepper with optional G. S. Rally Pack.



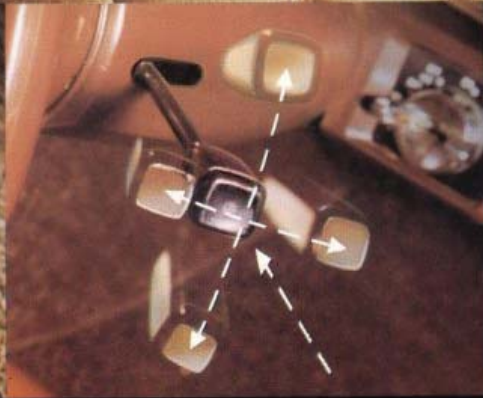
FALCON 500: Now with new front disc brakes as standard. A 200 CID 130 horsepower 'six' teamed with all synchro 3-speed manual column change transmission. Newly styled high-backed full-width front seats and contoured rear seats upholstered in deluxe vinyl. Padded door pull armrests front and rear. And a fully insulated passenger compartment as in the more expensive models.

All standard equipment features not already mentioned for Futura and Falcon 500 are itemised on the next two pages.



Futura and Falcon 500 Standard Equipment:
Apart from the items already mentioned on the previous pages, both models feature the following: Aeroflow flow-through ventilation system • Blendaire heater demister with 2-speed fan • 2-speed windscreen wipers with push button washer control • Steering and ignition lock • Interior courtesy lights • Reversing lights • Cigar lighter • 2-coat hooks • Styled exterior rear view mirror • Ventless front window • Lockable glove box • Low-profile 6.96L14 tyres on 5 inch double sided safety rim. All Ford Lifeguard design safety features listed on page 16. A full list of options is featured on pages 13, 14 and 15.

Futura interior illustrated left, Falcon 500 right.



New Steering Column stalk control
A single lever now controls the turn indicators, lane change warning, hi-lo beam, headlight washers and horn.

Front Disc Brakes now standard
An important new safety item on Falcon 500. Non-power hydraulic, but with a lower pedal effort than drum brakes, they give positive fade-free braking.

Cockpit type instrument panel
Falcon's unique wrap-round cockpit offers the driver positive control and clear vision of instruments and switches.

Car and body sensitive Inertia Reel seat belts
Allow free movement for front passenger and driver. They "lock-up" and provide positive protection in the case of an emergency — and retract fully when not in use.



New frontiers of performance and choice.

FALCON GT (5 TIMES 'BATHURST' WINNER): Australia's most precise and smoothly disciplined driving machine has been restyled and further improved to make it undoubtedly the finest of its kind in this country and among the best of its breed in the world.

Falcon GT now comes standard with power disc brakes on all four wheels. Take charge of this road-hugging, straight tracking, flat cornering machine. You'll find it equally at home on city streets or the open road. The new power grille and colour keyed exterior treatment



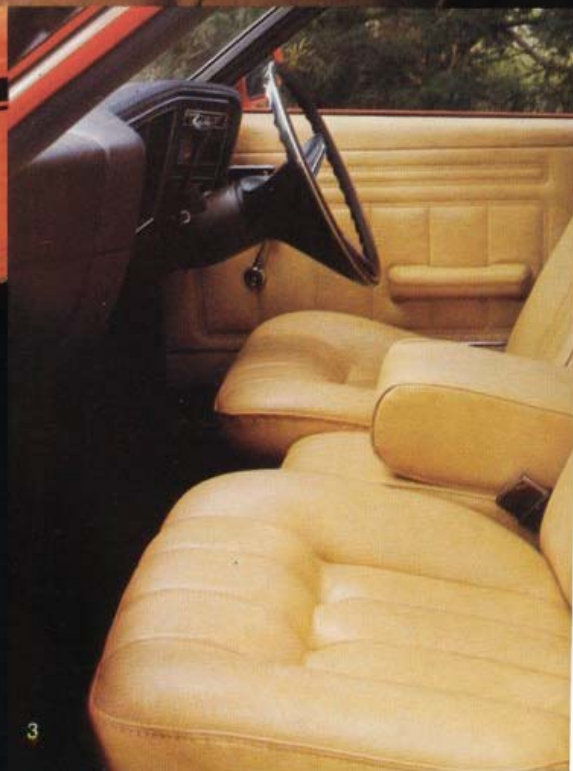
four co-ordinated bumpers, rocker panels and rear end panel), the NASA scoops and 'GT351' decal set heads rolling in appreciation of this personal luxury performance machine.

GRAND SPORT RALLY PACK:

On the outside you get the same equipment as the GT with built-in NASA

scoops. Bold side striping sweeps along the side of the car terminating in the 'GS' insignia. Special steel road wheels complete its sporty stance.

Inside you get full GT instrumentation and a sports steering wheel. (Full list of this optional equipment is listed on the next two pages.)



- 1) Falcon GT interior in luxury vinyl with optional T-Bar automatic transmission.
- 2) Wrapround rear tail light assembly with GS insignia.
- 3) Optional bucket seats with foldaway arm-rest console. (Futura model featured.)
- 4) GT/GS fully instrumented dash panel with optional super fringe push button radio.
- 5) 4 wheel turbo-cooled power disc brakes standard with GT and optional other models with 351 CID V8 engine.
- 6) GT/GS bonnet featuring NASA Scoops and hood lock pins.
- 7) Optional long range driving lights incorporated in special GT style grille.



Falcon GT Standard Equipment:

- 300-horsepower 351 CID 4-barrel V8 • Close ratio 4 on-the-floor all-synchro shift • Lowered competition-type suspension • Super-duty shock-absorbers • ER70-red-wall wide-oval tyres • Turbo-cooled power disc brakes on all four wheels • Quartz-iodine long-range driving lights • Fully-reclining, high-back bucket seats • Sports console with armrest • Sports steering wheel • Inertia reel front seat belts • Electric clock • Aeroflow flow-through ventilation • Blendaire heater and demister • Carpeting • Rear reading lights • Fully-instrumented cockpit dash • Tachometer; ammeter; oil-pressure, temperature and fuel gauges; speedometer calibrated in MPH and KPH; odometer • Steering column stalk control incorporating turn indicators, lane change, hi-lo beam,



- headlight flasher and dual horn button • Dual exhausts • Competition twin-plate clutch for high-torque transmission • Limited-slip differential • Special 6 JJ sports steel wheels with safety-rims • 17.5 gallon fuel tank • Flip-type fuel-cap • Interior courtesy lights operated by all doors • Lockable steering and ignition • Prismatic day/night mirror • Remote control exterior rear view mirror • Cigar lighter.

All Ford Lifeguard design safety features listed on page 16.

Falcon Grand Sport Rally Pack Specifications

Can be ordered as an option on Falcon 500, Futura and Fairmont models.

Exterior: NASA Scoop bonnet with colour keyed side panel stripes and GS motif.

Special pressed steel 6" road wheels with chrome hub centres and studs.

Interior: Full GT instrumentation — tachometer; ammeter; oil pressure, temperature and fuel gauges; speedometer calibrated in MPH and KPH, and electric clock. Sports steering wheel.

All other options listed on pages 14 and 15 are also available.



What makes Falcon the Great Australian Road Car?

Falcon has always been a driver's car — always given that feeling behind the wheel that imparts confidence — instinctively tells you this car will handle predictably — feel solid and steady under all road conditions.

New Falcon has been further refined in every department to make this the finest road car yet. Important refinements like standard front disc brakes with heavy duty brake pads sweeping a big 11.25 inch turbo-cooled disc. Like 'force variation' specifications for all tyres that eliminate vibration through the steering and increase

tyre performance. Like the redesigned energy absorbing steering column, known as 'friction disc' an exclusive Falcon feature and important safety device. Like refined engine components such as more durable nylon valve stem seals, improved hydraulic tappets and crankshaft torsional control dampers. A new 4 speed manual transmission with ratios ideally matched to engine torque characteristics. There is only one way to experience new Falcon's unique 'road car' feel and that's to get behind the wheel and drive it yourself.

We invite you to test drive New Falcon
The great Australian Road Car.



OPTIONAL EQUIPMENT	FALCON	FUTURA	FAIRMONT	FALCON
	500			GT

LUXURY EQUIPMENT

Power windows — front and rear (a)	NA	O	O	O
Tinted side and rear windows	O	O	O	O
Quarter-vent front windows	O	O	O	O
Variable ratio power steering	O	O	O	O
Sun roof	O	O	O	O
Combined Radio/Stereo Cassette tape player	O	O	O	O
SelectAire integrated air-conditioning (b)	O	O	O	O
Nylon-weave seat-trim inserts (bucket seats only)	O	O	O	O
Deep-pile carpeting (c)	O	Std	Std	Std
Reclining front bucket seats with seat belt 'stalks' — with foldaway centre armrest	O	O	Std	NA
— with sports console armrest (d)	O	O	O	Std
11-transistor push-button radio	O	O	O	O
7-transistor manual radio	O	O	O	O
Electric clock	O	O	O	Std
Electrically heated rear window demister	O	O	O	O

PERFORMANCE EQUIPMENT

4 wheel Power Disc Brakes (351 V8 only)	O	O	O	Std
Power Disc Brakes (front)	O	Std	Std	NA
Mag.-type sports road wheels	O	O	O	O
Lowered competition-type suspension (e)	O	O	O	Std
Limited-slip differential (Mandatory with 351 V8)	O	O	O	Std
Long range fuel tank	O	O	O	O
Dual exhaust system (f)	O	O	O	Std
Outback Package: Comprising Hi-ride suspension, heavy-duty shock absorbers, engine stone guard, fuel tank guard, heavy duty air cleaner	O	O	O	O
Taxi Kit and Taxi Radio Kit	O	O	NA	NA
Heavy-duty battery	O	O	O	Std
Driving lights (incorporated in grille)	O	O	O	Std

EXTERIOR/APPEARANCE ITEMS

Grand Sport rally pack	O	O	O	NA
Special protection group, comprising: front and rear bumper over-riders with black rubber inserts, full-length body-side mouldings with black vinyl inserts	O	O	O	O
Vinyl covered roof — in black, beige, brown, green or blue	O	O	O	O
Colour-keyed two-tone bonnet	NA	NA	NA	O
Styled full wheelcovers	O	Std	Std	NA
Exterior rear-view styled mirror (pass. side)	O	O	O	O
Remote control styled mirror (driver's side)	O	O	O	Std
Tutone paint (white roof)	O	O	O	O
Laminated and graduated-tint windscreen	O	O	O	O

Notes: (a) Power windows available only with ventless glass. (b) Air-conditioning available only with 250 CID '6' and V8 engines. (c) Carpeting must be fitted with optional bucket seats. (d) Sports console must be fitted with optional floor-mounted transmissions and is not available with full-width front seat. (e) Lowered competition-type suspension is optional with the 351 CID V8 and 302 CID V8 engines only. (f) Dual exhaust available only with 302 CID and 351 CID V8 engines.

ENGINE SPECIFICATIONS

Engines	200 CID Six	250 CID Six	302 CID V8	351 CID V8	GT V8
Carburettion	Single Barrel	Single Barrel	2 Barrel	2 Barrel	4 Barrel
Displacement: Cubic Inches Cubic Cm.	200 3280	250 4100	302 4950	351 5750	351 5750
Bore Stroke	3.68" x 3.13"	3.68" x 3.91"	4.0" x 3.0"	4.0" x 3.5"	4.0" x 3.5"
Compression	8.8:1	9.1:1	9.4:1	9.1:1	9.1:1
Max BHP at RPM	130 4600	155 4000	240 5000	260 4600	300 5400
Max Torque (lb/ft) at RPM	190 2000	240 1600	305 2600	355 2600	380 3400

POWER TRAIN COMBINATIONS

	FALCON 500	FUTURA	FAIRMONT	FALCON GT
200 CID, 130-horsepower Six with: All-synchro, 3-speed manual (column)	Std	NA	NA	NA
SelectShift Cruisomatic 3-speed (column)	O	NA	NA	NA
250 CID, 155-horsepower Six with: All-synchro, 3-speed manual (column)	O	Std	O/R	NA
All-synchro, 4-on-the-floor manual	O	O	O/R	NA
SelectShift Cruisomatic 3-speed (column)	O	O	Std	NA
SelectShift Cruisomatic 3-speed (T-Bar)	O	O	O	NA
302 CID, 240-horsepower V8 with: All-synchro, 3-speed manual (column)	O	O	O	NA
All-synchro, 4-on-the-floor manual	O	O	O	NA
SelectShift Cruisomatic 3-speed (column)	O	O	O	NA
SelectShift Cruisomatic 3-speed (T-Bar)	O	O	O	NA
351 CID, 260-hp, 2-barrel V8 with: All-synchro, 4-on-the-floor manual	O	O	O	NA
SelectShift Cruisomatic 3-speed (column)	O	O	O	NA
SelectShift Cruisomatic 3-speed (T-Bar)	O	O	O	NA
High-Performance 351 CID, 300-hp, 4-barrel V8 with: All-synchro, 4-on-the-floor manual	NA	NA	NA	Std
SelectShift Cruisomatic 3-speed (T-Bar)	NA	NA	NA	O

WHEELS AND TYRES

Extra-low-profile: 6.95L14, BSW, 5JJ wheels	Std	Std	Std	NA
7.35L14, BSW, 6JJ wheels	O	O	O	NA
7.35S14, WSW, 6JJ wheels	O	O	O	NA
Radial-Ply 185SR14, BSW, 6JJ wheels	O	O	O	NA
Special ER70H14, RSW, wide-oval, 6JJ wheels	O	O	O	Std

Code for charts: 'Std' means standard equipment. 'O' means optional at extra cost. 'NA' means not available. 'O/R' means optional at reduced cost.

FORD FALCON
Going Ford is the going thing!



SAFETY FEATURES:

Ford, the industry's safety pioneer, makes cars as strong and safe as possible—to protect you. The results of this policy are reflected in the following list of **Ford Lifeguard Safety Features**. They are standard on every model Falcon. They are built-in to (a) reduce the likelihood of an accident occurring and (b) reduce the likelihood of personal injury in case of an accident.

- * car and body-sensitive Inertia Reel front seat belts standard
- * front disc brakes standard
- * high-backed front seats
- * deeply-recessed, padded instrument panel
- * rocker-switch type controls
- * windshield-mounted, break-away, anti-glare interior rear-view mirror
- * 'Blendaire' heater/demister (2-speed)
- * collapsible steering column
- * impact-absorbing steering wheel with full-width padded hub
- * controlled collapsible front end
- * padded sun-visors
- * padded door-pull armrests
- * double-grip safety door locks
- * recessed interior door handles
- * 2-speed electric windscreen wipers
- * non-lift, non-reflective wiper blades
- * push-button electric windscreen washers
- * thick safety-plate glass windscreen with 'zone-toughened' area in front of driver, and safety-glass all other windows
- * seat belt warning light
- * dual hydraulic brake system with warning light
- * exterior rear-vision styled mirror
- * safety-rim wheels
- * high-intensity headlights
- * reversing lights
- * wrap-around front and rear turn lights
- * flush-mounted exterior door handles
- * seat belts: 2 lap-sash, 1 lap (front) on full-width seat models; 2 lap-sash (front) on bucket seat models; 2 lap-sash, 1 lap (rear) on all models.

SPECIFICATIONS:

Clutch (Manual Transmission):

Diaphragm spring type, single cushion disc dry plate, hydraulically operated. 200 CID and 250 CID 6-cylinder engines—diam. 9.50", friction area 78 sq. ins.

302 CID V8 engine—diam. 10.0", friction area 83.5 sq. ins. 351 CID 2V and 4V: Twin plate diaphragm spring type. Dry plate, hydraulically operated, diam. 9.5", friction area 170.4 sq. ins.

Manual Transmission: Column shift:

3 forward speeds all-synchro—1 reverse. Ratios: 6-cylinder: 1st—2.95; 2nd—1.69; 3rd—1.00; reverse—3.67. 8-cylinder: 1st—2.71; 2nd—1.69; 3rd—1.00; reverse—3.37.

Four-On-The-Floor Manual: 351 4V: All-synchro. Ratios: 1st—2.78; 2nd—1.93; 3rd—1.36; 4th—1.00; reverse—2.78. 200 and 250 CID 'sixes', 302 CID V8 and 351 CID 2V V8—Ratios: 1st—2.82; 2nd—1.84; 3rd—1.32; 4th—1.00; reverse—2.56.

Automatic Transmission: 200 CID and 250 CID 6 cylinder engine with Cruisomatic. Ratios: 1st—2.39; 2nd—1.45; 3rd—1.00; reverse—2.09. 302 CID V8 and 351 CID V8. Ratios: 1st—2.46; 2nd—1.46; 3rd—1.00; reverse—2.20. 351 CID GT V8. Ratios: 1st—2.40; 2nd—1.47; 3rd—1.00; reverse—2.00.

Rear Axle: Ratios (to 1): 200 CID 6-cylinder engine (manual/automatic) 3.23. 250 CID 6-cylinder engine (3 speed manual) 3.23; (automatic) 2.92. (4 speed manual) 2.92. 302 CID V8 (manual/automatic) 2.92. 351 CID V8 (manual) 3.00; (automatic) 2.75. GT V8 (manual) 3.00; (automatic) 2.75.

Front Suspension: Angle-poised ball-joint type. Heavy duty coil springs with

hydraulic shock absorbers. Torsion bar ride stabilizer.

hydraulic shock absorbers. Torsion bar ride stabilizer.

Rear Suspension: Semi-elliptical asymmetrical, longitudinally-mounted leaf springs. Diagonally mounted hydraulic shock absorbers. Rubber bushed shackles.

Steering: Recirculating ball type. Steering gear ratio—20:1. GT fast ratio—16:1. Optional power steering—variable ratio 17.5:1-11.5:1 at lock. Steering wheel—16" diam. Turning circle 39.4 ft.

Brakes: Dual Line system with inbuilt warning light on instrument panel. Self-adjusting hydraulic, 10" x 1.75" rear drums. Floating caliper-type power disc front brakes, turbo-cooled and ventilated, 11.25" diam. (non-power Falcon 500). GT rear brakes are power discs.

Weights: Approximate kerb weight with 200 CID engine, manual transmission—from 3047 lbs. Add 29 lb. for Cruisomatic.

Fuel Tank Capacity: 17.5 gals.

Dimensions: Overall length—189.3", overall width—74.8", overall height—53.9", wheelbase—111". Track: front—60.5", rear—60". Ground clearance—5.4".

Warranty: Ford* warrants with respect to each new passenger or light commercial vehicle sold by Ford that for a period of 12 months or 12,000 miles (whichever first occurs) from the date of original retail sale Ford will repair or replace free of charge any part of such vehicle (except tyres) found to be defective in factory materials or workmanship under normal use and operation within Australia

PROVIDED THAT:

- (i) the vehicle has been properly used, operated, maintained and cared for, and,
- (ii) the repair or replacement is carried out by an authorised Ford Dealer.

* "Ford" means Ford Sales Company of Australia Limited.

Illustrations and information presented were correct when approved for printing. Ford Motor Company of Australia Limited and/or Ford Sales Company of Australia Limited reserves the right to discontinue or change at any time, specifications or design without incurring obligations. Some features shown or described are optional at extra cost. Some options are required in combination with other options. Always consult your Ford Dealer for the latest, most complete information on models, features, prices and availability.

FORD SALES COMPANY OF AUSTRALIA LIMITED. 1735 Sydney Rd, Campbellfield.

